

PERFORMANCE VALVE STEM SEALS

Engine Pro offers the solution to oil control problems in any performance valve seal situation. From seals requiring no machining to those requiring machining of the guide with a cutter, we have the answers!

- Full Range of Materials for All Sealing Needs
- Large Selection of Sizes



PART #	STEM DIAMETER	GUIDE DIAMETER	UNLOADED SEAL DIA.	TYPE	MATERIAL
35-8476V-16	5/16"	.476	.575	POSITIVE METAL CLAD	FLUOROVITON
35-306V-16	5/16"	.485	.625	POSITIVE	FLUOROVITON
35-804V-16	5/16"	.502	.625	POSITIVE METAL CLAD	FLUOROVITON
35-802V-16	5/16"	.531	.680	POSITIVE METAL CLAD	FLUOROVITON
35-133P-16	11/32"			O-RING	POLYACRYLIC
35-125V-16	11/32"	.485	.630	POSITIVE METAL CLAD	FLUOROVITON
35-1611-16	11/32"	.500	.610	POSITIVE	TEFLON
35-104V-16	11/32"	.500	.625	POSITIVE	FLUOROVITON
35-104P-16	11/32"	.500	.625	POSITIVE	POLYACRYLIC
35-1711-16	11/32"	.531	.630	POSITIVE	TEFLON
35-529V-16	11/32"	.531	.675	POSITIVE METAL CLAD	FLUOROVITON
35-408AP-16	11/32"	.531	.680	POSITIVE	POLYACRYLIC
35-305V-16	11/32"	.562	.700	POSITIVE	FLUOROVITON
35-304P-16	11/32"	.562	.700	POSITIVE	POLYACRYLIC
35-233V-16	11/32"	.672	.750	UMBRELLA	FLUOROVITON
35-232P-16	11/32"	.672	.750	UMBRELLA	POLYACRYLIC
35-1612-16	3/8"	.500	.600	POSITIVE	TEFLON
35-1712-16	3/8"	.531	.630	POSITIVE	TEFLON
35-375V-16	3/8"	.531	.665	POSITIVE METAL CLAD	FLUOROVITON
35-377V-16	3/8"	.562	.675	POSITIVE METAL CLAD	FLUOROVITON

ROTATOR ELIMINATORS FOR CHEVROLET BIG BLOCK

For use on Chevrolet Big Block applications. Eliminates O.E. rotators on the exhaust valve while providing positive location of the valve spring.

- Flat, True and Dimensionally Accurate
- Case Hardened
- Smooth Stable Surface

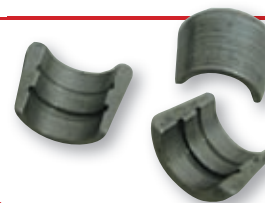


PART #	DESCRIPTION	THICKNESS	O.D.	SPRING O.D.	SPRING I.D.
03-4000-8	CHEVROLET BIG BLOCK EXHAUST ROTATOR ELIMINATOR	.300"	1.732"	1.568"	.623"

VALVE LOCKS

Engine Pro locks are available in two types: stamped or machined. Our OEM style lock is stamped from premium materials and case hardened. Our premium performance locks are machined chrome moly steel and are recommended for severe duty applications with higher spring pressures.

- All Locks are Case Hardened
- OEM Style Lock is for Mild Performance Engine Applications
- Premium Lock is Machined from High Grade Chrome Moly Steel and Case Hardened to a Depth of .015" for High Horsepower Use
- Premium Locks with 11/32" Stem Available for +.050" and -.050" Installed Height.



PART #	VALVE HEIGHT	VALVE STEM SIZE	LOCK ANGLE	LASH CAP RECESS	MATERIAL
04-1000-32	STOCK INSTALLED HEIGHT	11/32"	7 DEGREES	NO	STAMPED STEEL
04-1001-32	STOCK INSTALLED HEIGHT	11/32"	7 DEGREES	NO	MACHINED CHROME MOLY
04-1008-32	+.050 INSTALLED HEIGHT	11/32"	7 DEGREES	NO	MACHINED CHROME MOLY
04-1009-32	-.050 INSTALLED HEIGHT	11/32"	7 DEGREES	NO	MACHINED CHROME MOLY
04-1002-32	STOCK INSTALLED HEIGHT	11/32"	10 DEGREES	YES	MACHINED CHROME MOLY
04-1003-32	+.050 INSTALLED HEIGHT	11/32"	10 DEGREES	NO	MACHINED CHROME MOLY
04-1004-32	-.050 INSTALLED HEIGHT	11/32"	10 DEGREES	NO	MACHINED CHROME MOLY
04-1005-32	STOCK INSTALLED HEIGHT	3/8"	7 DEGREES	NO	MACHINED CHROME MOLY
04-1010-32	+.050 INSTALLED HEIGHT	3/8"	7 DEGREES	NO	MACHINED CHROME MOLY
04-1011-32	-.050 INSTALLED HEIGHT	3/8"	7 DEGREES	NO	MACHINED CHROME MOLY
04-1006-32	STOCK INSTALLED HEIGHT	3/8"	10 DEGREES	YES	MACHINED CHROME MOLY
04-1007-32	STOCK INSTALLED HEIGHT	8mm	7 DEGREES*	NO	MACHINED CHROME ALLOY

* Bead lock for Chevrolet LS valves